

# Pressure Gauge Syphons

## DIN 16 283 or industrial standard

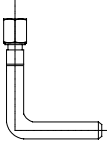

### Application

Pressure gauge syphons are intended to protect the pressure gauge from the effect of hot pressure media and also to reduce the effect of rapid pressure surges.

### Material

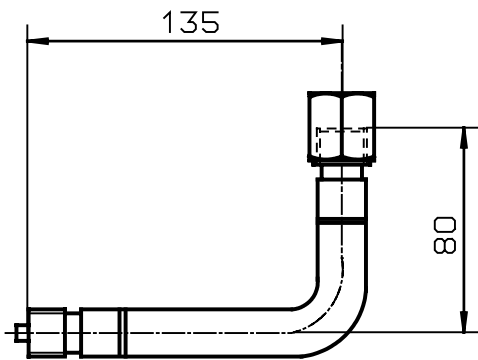
Carbon steel ( St 33 or St 35.8 )  
Stainless steel ( 1.4571 )



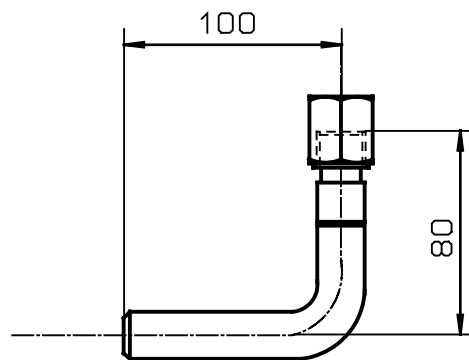
Design	Connection	Material	Max.PN in bar	Max. Temp. °C	Form	Article no.
	<b>Angle-Form , with connecting sleeve x male 1/2" Form A</b> <b>Angle-Form , connecting sleeve with entry butt welding Form B</b>					
	G 1/2	St 35.8	100	120 °C	A	ZW 612
		St 35.8			B	ZW 612
		stainless steel	80	300 °C	A	ZW 613
		stainless steel	63	400 °C	B	ZW 613
	<b>Straight form , with connecting sleeve x male thread 1/2" Form A</b> <b>Straight form with connecting sleeve entry butt welding Form B</b>					
	G 1/2	St 35.8	100	120 °C	A	ZW 512
		St 35.8			B	ZW 512
		stainless steel	80	300 °C	A	ZW 513
		stainless steel	63	400 °C	B	ZW 513

## Dimensions

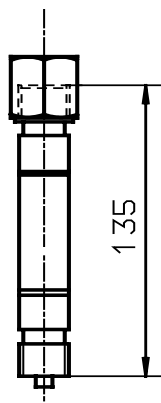
**Form A**



**Form B**



**Form A**



**Form B**

